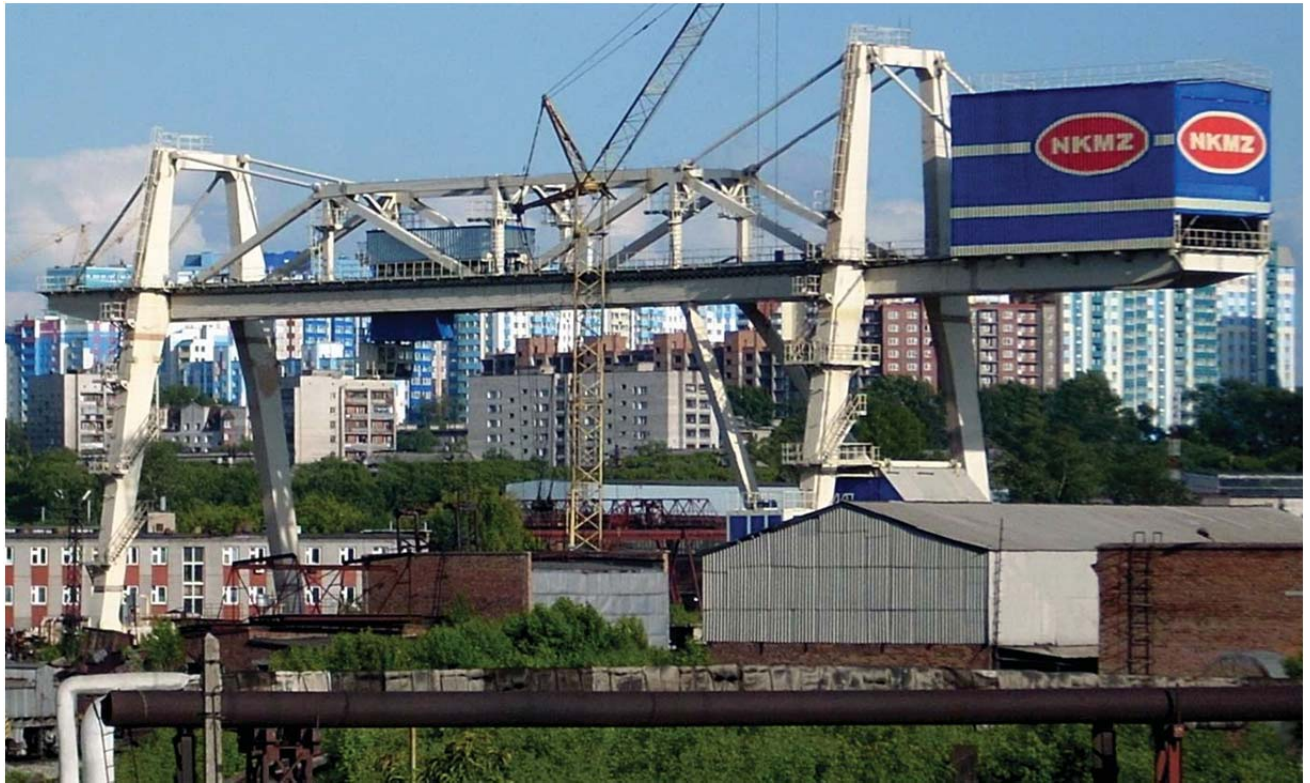


**Handling and special-purpose equipment.  
Overhead grab reloaders**



Technical specification

Parameter name	Value
Capacity	Up to 700 t/h
Lifting capacity	Up to 40 t
Distance between supports	Up to 115 m
Car travel	Up to 160 m
Lift height (from the rail)	Up to 18 m
Lowering height (below the rail)	Up to 17 m
Lifting speed	75 m/min
Reloader travel speed	25 m/min
Car travel speed	232 m/min