

**Rolling mill equipment and rolls.
Sheet cutting shears**

CHOPPERS

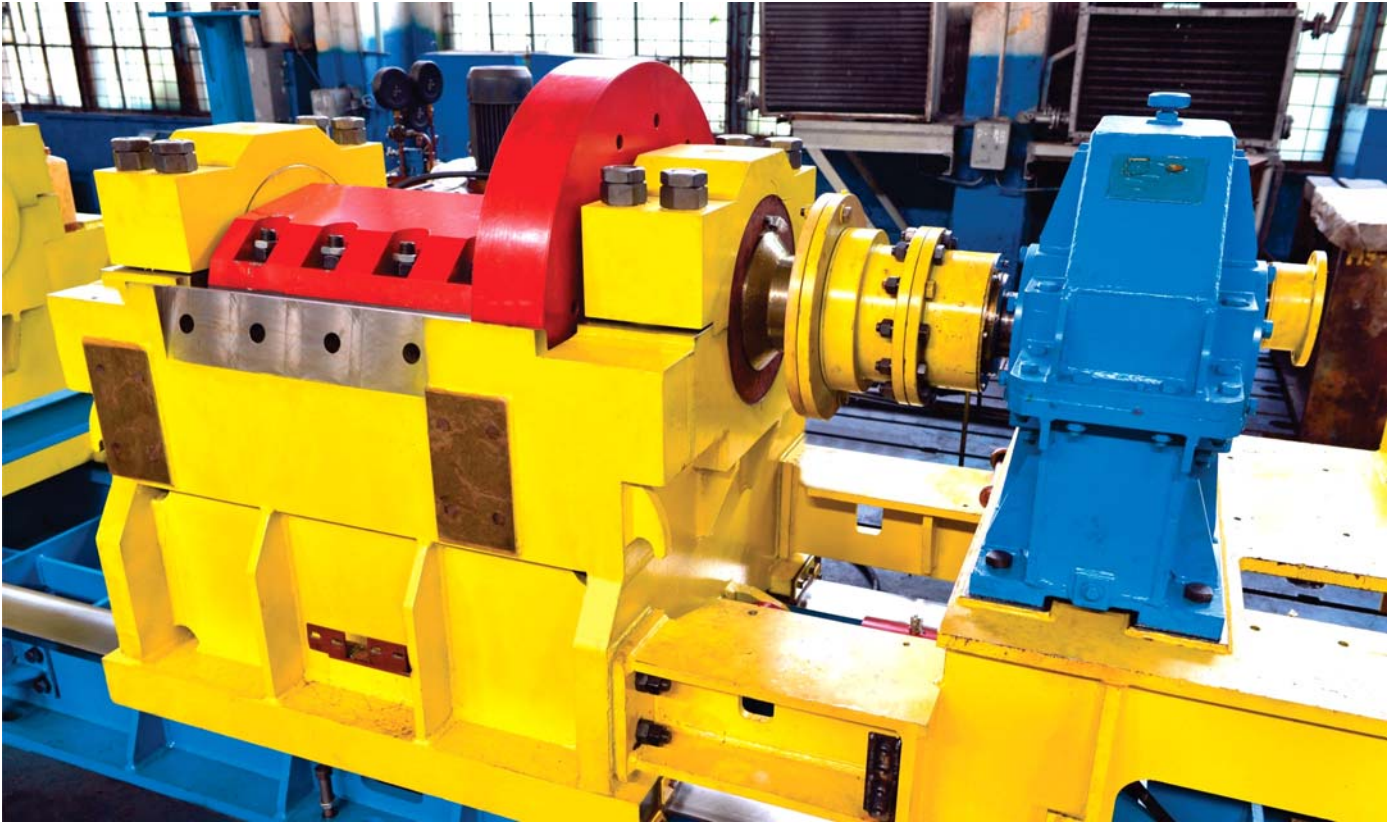


Specification

Company	“AMK”, Alchevsk
Application	Crushing edge from rotary shears
Type	Flying
Drive	Electromechanical
Sheet characteristics: - thickness, mm - width, mm	8...30 1000...2600
Max. tensile strength of sheet material, MPa	800
Max. length of scrap, mm	150
Speed of crop coming to crushing, m/s	0,415
Max. length of scrap after crushing, mm	544
Cutting force, MN	0,65
No. of blades on one drum, pc.	4

**Rolling mill equipment and rolls.
Sheet cutting shears**

CHOPPERS

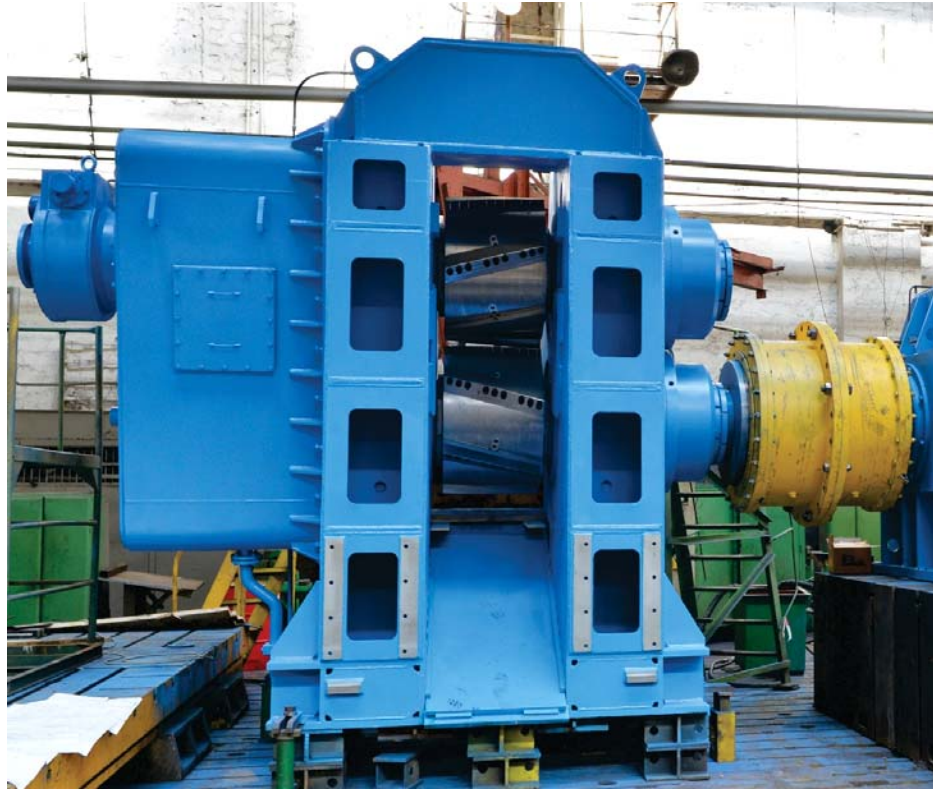


Specification

Company	“Zaporizhstal” Integrated Iron and Steel Works, Zaporizhia
Application	Crushing edge from rotary shears
Type	Flying
Drive	Electromechanical
Sheet characteristics: - material - thickness, mm - width, mm	Stainless steel 1...8 710...1520
Max. tensile strength of sheet material, MPa	750
Max. length of scrap, mm	40
Edge movement speed, m/s	up to 2,5
Max. length of scrap after crushing, mm	180
Cutting force, MN	0,16
No. of blades on one drum, pc.	2

**Rolling mill equipment and rolls.
Sheet cutting shears**

DRUM-TYPE SCRAP SHEARS



Specification

Company	“AM3”, Asha
Application	Cutting head and tail ends after cross-cutting shears to scrap
Type	Flying
Drive	Electromechanical
Cut metal characteristics: - thickness/tensile strength, mm/MPa - thickness/tensile strength, mm/MPa - thickness/tensile strength, mm/MPa - thickness/tensile strength, mm/MPa - width, mm	5...27/1200 28...40/1000 41...45/800 46...50/700 up to 500
Characteristics of received products	Crop length 670 mm
Cutting speed, m/s: - at the thickness of 5...27 mm - at the thickness of 28...50 mm	0,6 0,4
Max. cutting force, MN	3,6
No. of blades on each drum, pc.	6