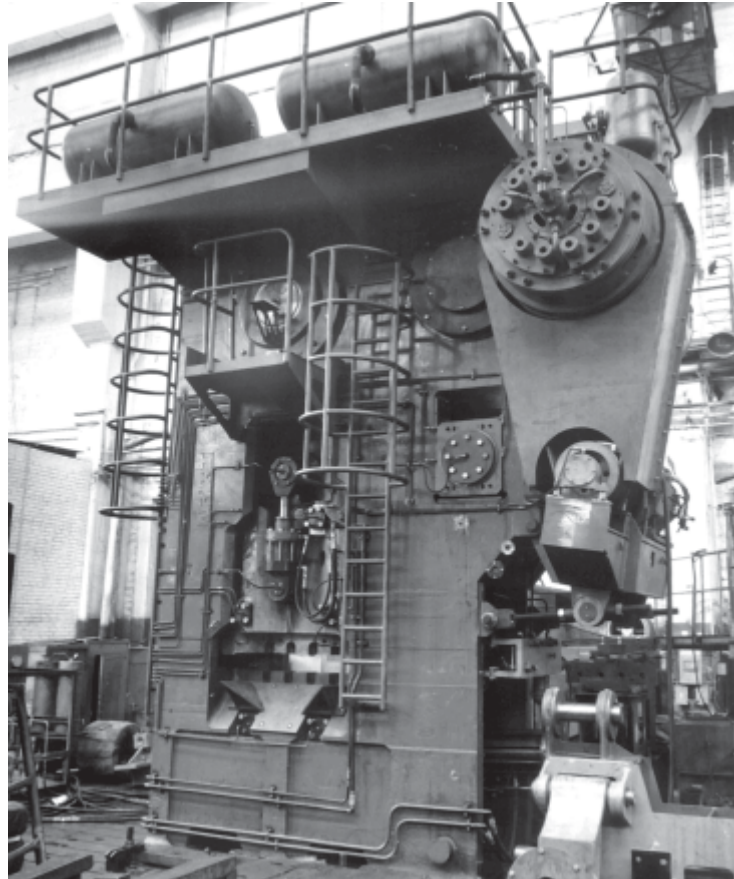


**Rolling mill equipment and rolling mill rolls.
Bar-cutting shears**

BAR AND STRUCTURAL SHAPES CUTTING SHEARS



Specification

Company	Metallurgical plant, Ajaokuta (Nigeria)
Application	Cutting shapes to length
Type	stationary
Drive	electromechanical
Cut shapes: - I-beams - channels - angles - strips - round bars - other shapes with cross-section, max., mm ²	up to No. 30 inclusive up to No. 30 inclusive up to No. 12,5 inclusive up to 10x450 inclusive up to 35 inclusive 6000
Cutting force - at vertical cutting, MN - at cutting at an angle of 45 deg., MN	10 7,5
No. of cuts per minute	10

**Rolling mill equipment and rolling mill rolls.
 Bar-cutting shears**

BAR SHEARS



Specification

Company	Metallurgical plant “Energostil”, Zmiev,
Application	Cutting blank to length
Type	stationary
Drive	hydraulic
Cut blank specification: - max. dia., mm - min. temperature, °C - max. strength, MPa	40 800 150
Sears force, MN	0,2

**Rolling mill equipment and rolling mill rolls.
Bar-cutting shears**

BAR-CUTTING FLYING SHEARS



Specification

Company	“NSMMZ”, Nizhniye Sergi, 250/150 mill
Application	Cutting to length
Type	flying
Drive	electromechanical
Cut steel specification:	Material – carbon steel of ordinary quality, carbon high-quality structural and structural low alloy steel
Area of section cut with straight knives, sq.mm	up to 650
Range of products cut with pattern knives:	Equilateral angle Nos 2,5; 3; 3,2;3,6;4;5
Max.strength, MPa	97
Temperature of cut material, °C	900...1000
Rolled steel traveling speed, m/s	6...12
Shears force, MN	0,08

**Rolling mill equipment and rolling mill rolls.
 Bar-cutting shears**

BLANK CUTTING SHEARS



Specification

Company	“DMPZ”, Donetsk
Application	Cutting CCM blanks to length
Type	stationary
Drive	hydraulic
Cut blank specification: - max.cross section, mm - minimal temperature, °C	150x150 1150
Shear mouth (on square diagonal), mm	278
Cutting force, MH	0,75

**Rolling mill equipment and rolling mill rolls.
 Bar-cutting shears**

FLYING SHEARS TO CUT CCM BLANK



Specification

Company	Metallurgical plant, Yenakiyevo
Application	Cutting CCM blanks to length
Type	Flying
Drive	Hydraulic
Cut blank specification: - max.cross section, mm - min. temperature, °C	150x150 800
Travelling speed, m/min	2,8...4
Shear mouth (on square diagonal), mm	278
Cutting force, MH	2,4